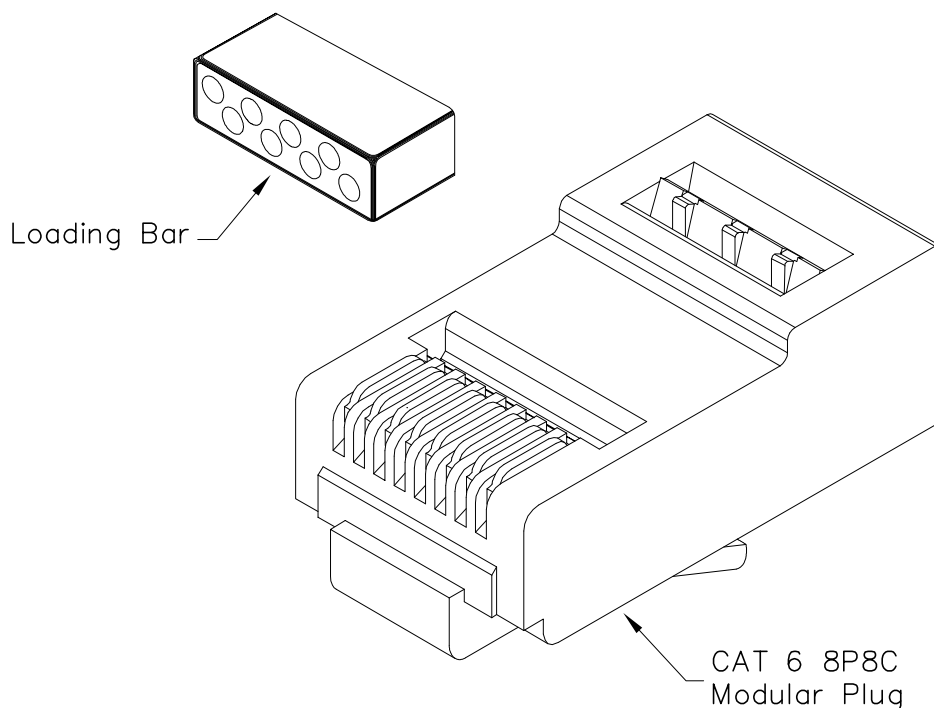


CAT 6 Solid/Stranded 8P8C RJ-45 Modular Plug

PRODUCT SPECIFICATION

Package includes:


- A. CAT 6 8P8C Modular Plug, 100 pcs
- B. Loading Bar, 100 pcs



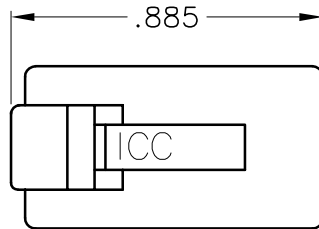
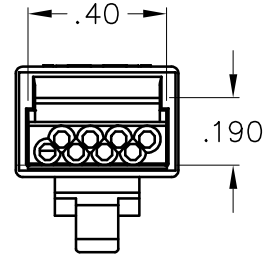
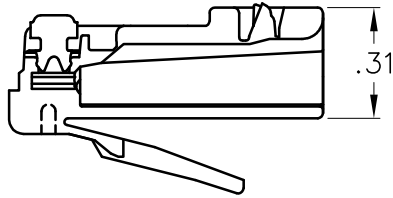
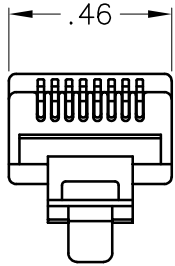
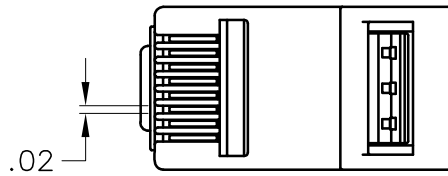
Features and Benefits:

- Designed for CAT 6, 8-position 8-conductor, solid or stranded wire
- Ideal for customization of cords for voice or high speed data applications
- Accepts 24~23 AWG solid or stranded
- Used with ICACSCT864 and ICACSCT845 crimping tools

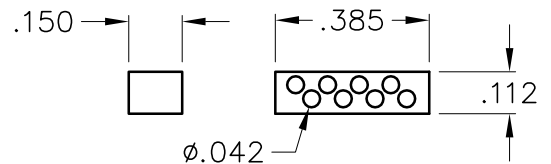
rhox
áudio e vídeo pro

| | | | |
|---|------------|--|--------|
| PLUG, CAT 6, SOLID/STRANDED, 100PK | |  <i>Premium Products</i> <i>Proven Performance</i> <i>Competitive Prices</i> | |
| ITEM NO. | ICMP8P8C6E | | REV. A |
| DWG NO. | PSMP8P8C6E | PAGE NO. | 1 |

CUSTOMER CARE / TECHNICAL SUPPORT * CSR@ICC.COM / 888-ASK-4-ICC (275-4422) * 14700 Alondra Blvd., La Mirada, CA 90638 * www.icc.com



LOADING BAR



NOTE: UNLESS OTHERWISE SPECIFIED

1. ELECTRICAL:

- A. CURRENT/VOLTAGE RATING: 1.5 AMPS / 30 VAC 42 VDC
- B. CONTACT RESISTANCE: 10 MILLIOHMS MAX.

2. PERFORMANCE:

- A. MEETS OR EXCEEDS CATEGORY 6 EIA/TIA 568 A-B.2
- B. INSERTION/EXTRACTION LIFE: 1000 CYCLES
- C. ROHS COMPLIANT

3. OPERATION TEMPERATURE: -40°C ~ +85°C

4. MATERIAL & FINISH:

- A. HOUSING: POLYCARBONATE, UL 94V-0
- B. CONTACT: PHOSPHOR BRONZE, .012 THICK
- C. GOLD PLATING: STANDARD PLATING IS 1.27 MICRON/50 MICRO INCH GOLD OVER 100 MICRO INCH NICKEL

D. LOADING BAR:

- COLOR: BLACK
- MAXIMUM STRANDED/SOLID CONDUCTOR DIAMETER: 0.042"

PLUG, CAT 6, SOLID/STRANDED, 100PK

ITEM NO. ICMP8P8C6E

REV. A

DWG NO. PSMP8P8C6E

PAGE NO. 2



CUSTOMER CARE / TECHNICAL SUPPORT * CSR@ICC.COM / 888-ASK-4-ICC (275-4422) * 14700 Alondra Blvd., La Mirada, CA 90638 * www.icc.com