



OPERATIONAL PRINCIPLES

One way loudspeaker
360° uniform sound dispersion
Extremely broad frequency bandwidth

DISTINCTIVE FEATURES

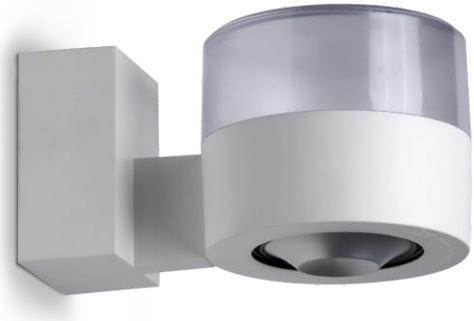
Elegant design, variable colours
Wall mountable with a fixed clip system
Superior tone quality
Excellent voice clarity characteristics

APPLICATIONS

Excellent sound quality for all requirements
Ranging from soft background music up to the reproduction of high level stereo in surround and HiFi quality

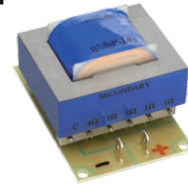
SUITABILITY

Sound redefines the perception of space.
Quality acoustics influences our well-being and may extend the time we spend in shops, bars, restaurants and customer orientated locations or in the wellness areas.
The conical geometry of the S50 produces a uniform dispersion of sound, but conceals its source. A soft comfortable sound fingerprint is created through the use of a novel aluminium membrane. Maximum sound quality is achieved even in the smallest space and can thus be utilised for smooth background sound as well as the reproduction of a high level stereo in surround and HiFi quality.
Contrary to conventional speakers, a considerably higher level of quality sound with less sound equipment is achieved. Each model is available in three distinct technical versions with a minimum difference in appearance.
This design orientated method of construction offers variety from pure sound to attractive coexistence with different light systems. This additional flexibility means that the unit can be readily adapted to changing room aspects without having to replace the underlying model.

STYLE S50 / S40T
SPEAKER SYSTEMS

SWITCHING UNIT

TR-20
Code 31011



TECHNICAL DATA

	STYLE S50	STYLE S40T
TYPE	Wall mounted	Wall mounted
PRINCIPLE	One way	One way
ENCLOSURE	High-performance plastic flange 150° continuous use / Recyclable / Formstable up to 220° / Fireclass UL94 / V-0 self extinguish	High-performance plastic flange 150° continuous use / Recyclable / Formstable up to 220° / Fireclass UL94 / V-0 self extinguish
COLOUR	White RAL 9010	White RAL 9010
DRIVER EQUIPMENT	-----	100V transformer
IMPEDANCE	16 Ohm	-----
NOMINAL PWR / MUSIC	50W RMS / 90W	40/20/10/5W RMS
SENSITIVITY (1W @1m, 2,83V @1m)	83,4dB @16Ohm	83,4dB
MAX. SPL	100dB	100dB
FREQUENCY RESPONSE	105-20.000 Hz (+/- 3dB)	105-20.000 Hz (+/- 3dB)
CONNECTORS	Press terminal	Press terminal
NET WEIGHT	3,28 lb	4,16 lb
TRANSPORT WEIGHT	4,05 lb	4,93 lb

DIMENSIONS

