

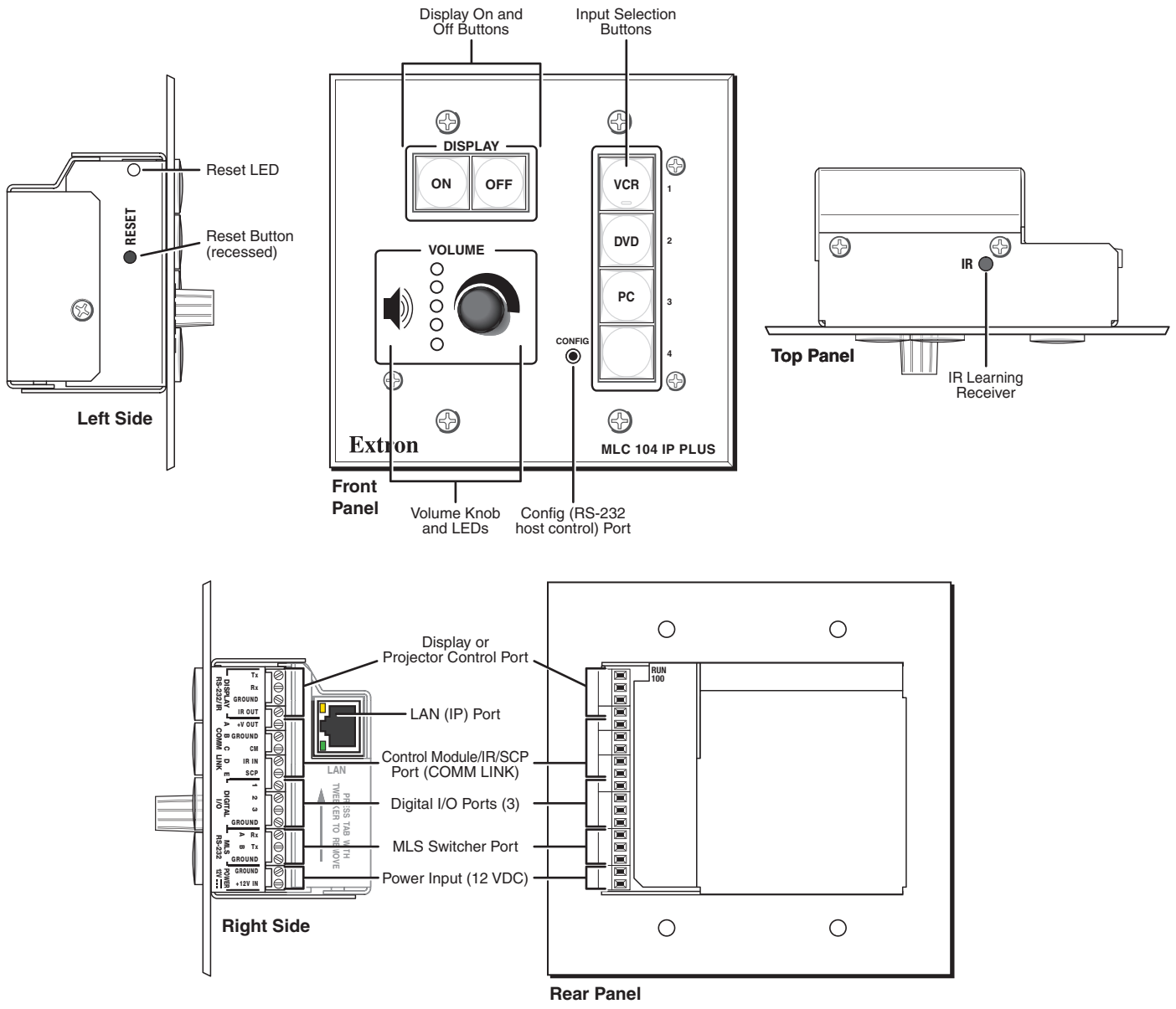
IMPORTANT:
Go to www.extron.com for the complete user guide, installation instructions, and specifications before connecting the product to the power source.

The Extron MLC 104 IP Plus Series MediaLink® Controller integrates Ethernet connection into AV systems to allow users to remotely control, monitor, and troubleshoot AV equipment, including display devices and switchers. It includes an embedded web server, serial ports, and configurable digital I/O ports for use in applications that require control and monitoring of multiple devices within an AV system.

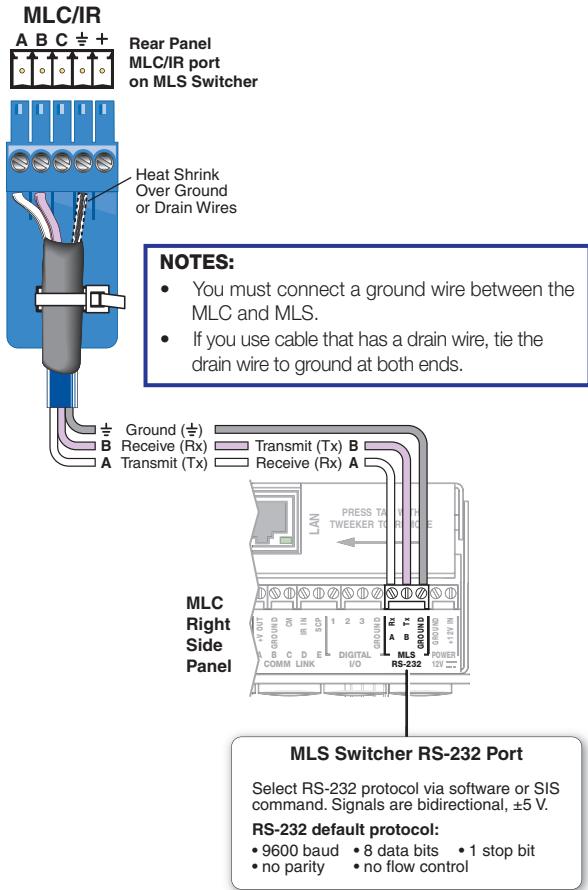
The MLC 104 IP Plus series of controllers are configured using the free Extron Global Configurator® (GC) software. The MLCs integrate seamlessly with Extron GlobalViewer® Enterprise (GVE) software and the free GlobalViewer web-based AV resource management software for remote control applications. Global Configurator and other useful software applications are available at www.extron.com.

A checklist of basic setup steps is provided at the end of this guide. For additional information see the help files and the *MLC 104 IP Plus Series User Guide*, available at www.extron.com.

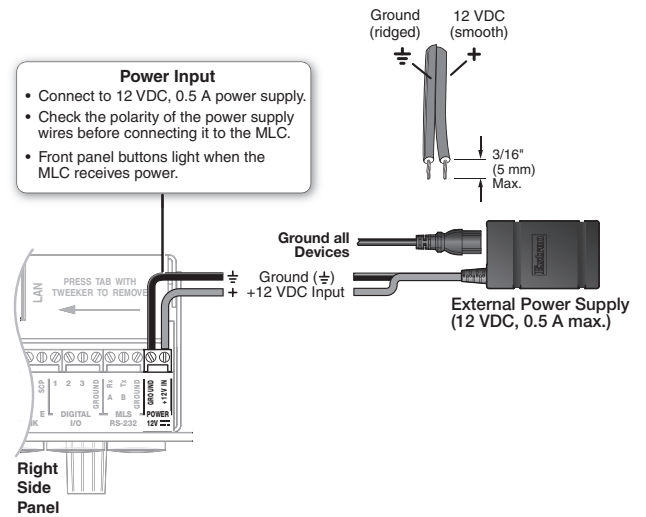
Panels and Features



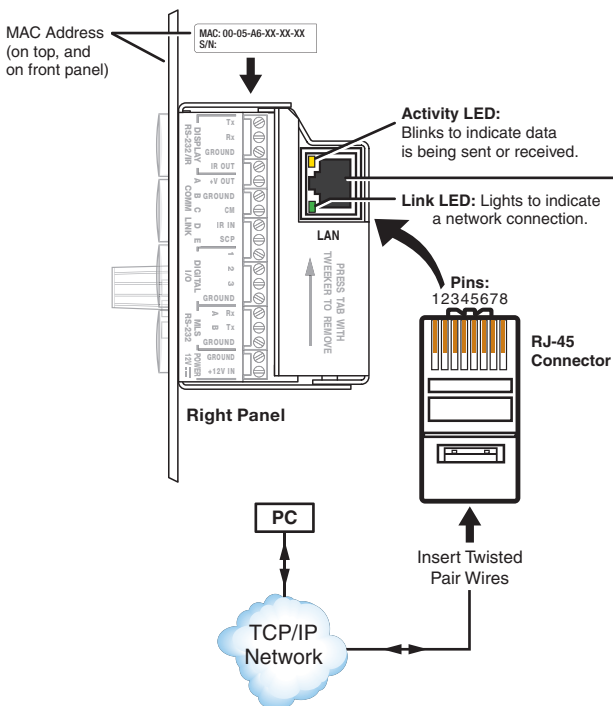
Control – MLS Switcher (MLS RS-232 Port)



Power



Control – LAN (Ethernet)



Ethernet (LAN)

Connect to an Ethernet network with a straight through cable. This port must be configured.

Default protocol:

- MLC IP address: 192.168.254.254
- Gateway IP address: 0.0.0.0
- Subnet mask: 255.255.0.0
- DHCP: off
- Link speed and duplex level: autodetected

NOTE: You must use this LAN port to set up the MLC and upload GC configuration files and firmware. All configuration can be performed via this port.

Straight-through Cable
(for connection to a switch, hub, or router)

Pin	Wire Color	Pin	Wire Color
1	white-orange	1	white-orange
2	orange	2	orange
3	white-green	3	white-green
4	blue	4	blue
5	white-blue	5	white-blue
6	green	6	green
7	white-brown	7	white-brown
8	brown	8	brown

Crossover Cable
(for direct connection to a PC)

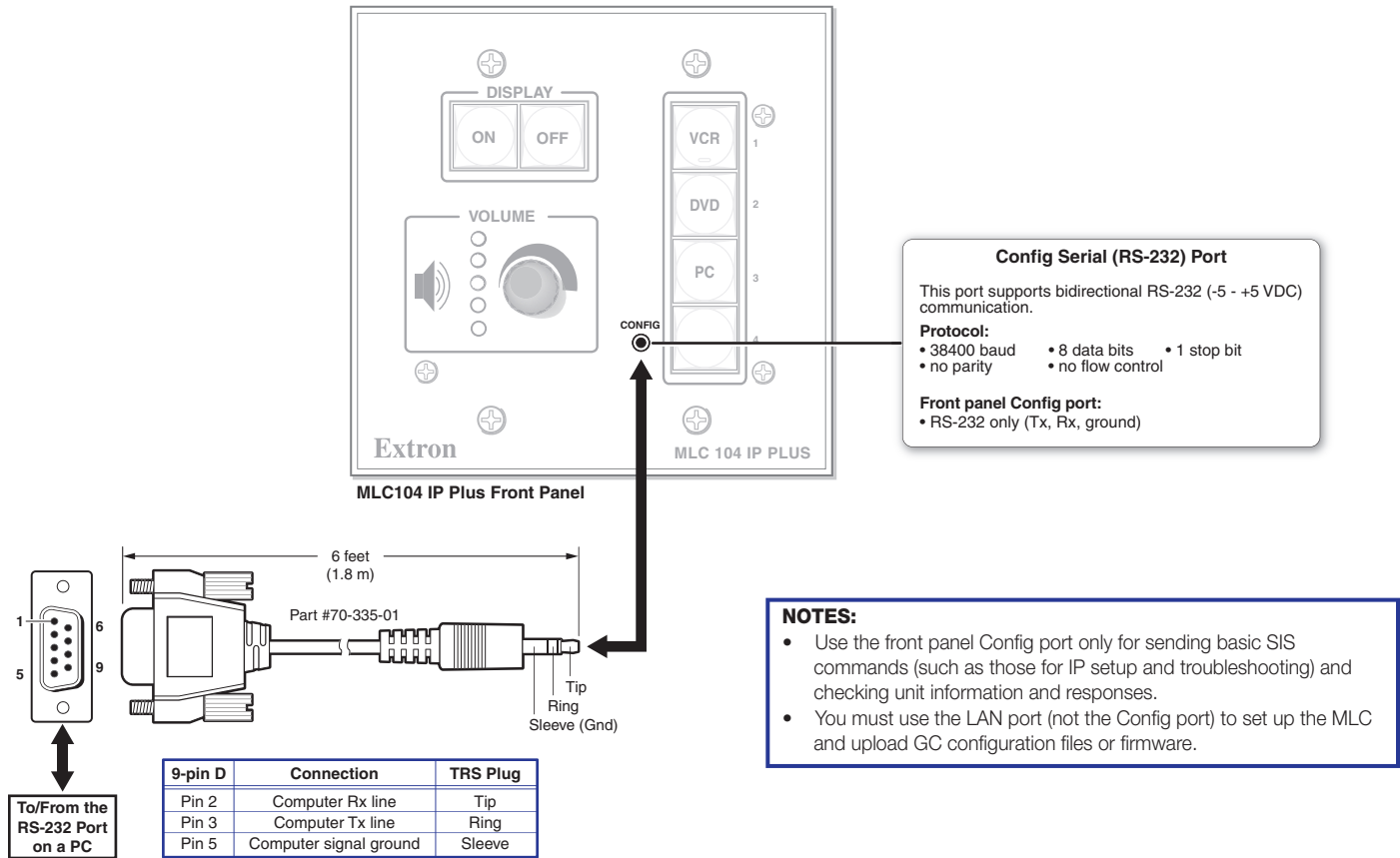
Pin	End 1 Wire Color	Pin	End 2 Wire Color
1	white-orange	1	white-green
2	orange	2	green
3	white-green	3	white-orange
4	blue	4	blue
5	white-blue	5	white-blue
6	green	6	orange
7	white-brown	7	white-brown
8	brown	8	brown

Both ends use the TIA/EIA T568A wiring standard.

Wire end 1 following the TIA/EIA T568A wiring standard, wire end 2 with the T568B wiring standard.

MLC 104 IP Plus Series • Setup Guide (Continued)

Control – Serial (Config)



About Global Configurator (GC)

What It Does

Global Configurator is the software tool for setting up an MLC and the system it controls. Global Configurator:

- Loads device drivers and uses commands from them for controlling other products
- Creates a single configuration file containing all the settings for the MLC and the products it interacts with in the AV system
- Generates a graphical user interface called GlobalViewer that is uploaded to the MLC (a GlobalViewer host device) along with the completed configuration and can be accessed as a web page

By using GlobalViewer, users can manage, monitor, and control Extron and third-party equipment such as projectors, displays, computer monitors, Blu-ray™ players, and DVD players.

What To Set Up in GC

Use GC software to create a configuration that tells the MLC how its ports will function; how to control other products; what to monitor; when to do things; and whom to notify, how, when, and under what circumstances.

Configuration

1. Download and install the latest versions of the following:
 - Global Configurator software — for setting up the MLC and creating a single system configuration file
 - Device driver package — for use with GC, to make control of other devices possible

All are available from www.extron.com or on the included Extron Software Products Disc.

2. Obtain IP address and subnet mask information for the MLC from the network administrator.

3. Cable devices to the MLC (see [Cabling and Features](#) in this guide), then power on all the devices.
4. Connect the MLC to a network, power it on, and use ARP (address resolution protocol) to set the IP address for the unit (see [Network Configuration Using ARP](#) below).
5. Using Global Configurator, create a project, configure the MLC and other IP Link devices, and upload the configuration to the MLC.
6. Launch the GlobalViewer interface and test the configuration and the system.

NOTE: Additional information and step-by-step instructions on configuration tasks are available in the *Global Configurator Help* file. The *Global Configurator Help* file includes an introduction to the software and how to start a GC project.

Resources

Obtaining Control Drivers

Extron provides an extensive selection of device drivers in the driver package available on the Extron website. If the system requires a control driver that is not part of the driver package, you have additional options:

- Request a new serial (RS-232) driver from Extron.
- Create your own custom IR device driver using Extron IR Learner software. Follow the directions in the IR Learner Help file to create a driver by using the remote control for that device and the IR receiver port on the front panel of the MLC.

Instructions, Information, and Assistance

For additional information see the help files and the *MLC 104 IP Plus Series User Guide*, available at www.extron.com.

If you have questions during installation and setup, call the [Extron S3 Sales & Technical Support Hotline](#) or the [Extron Control Systems Support Hotline](#).

Configuring for Network Communication

Network Configuration Options

When you power on the MLC for the first time, you have a choice of several ways to set up the IP address:

- Use the ARP (address resolution protocol) command — See the instructions below.
- Use a Web browser — See the *MLC 104 IP Plus Series User Guide*.
- Use the Global Configurator software — See the *Global Configurator Help* file
- Use the SIS commands via Telnet — See the *MLC 104 IP Plus Series User Guide*

Network Configuration Using ARP

Use ARP to configure the IP address as follows:

1. Obtain a valid IP address for the MLC from the network administrator.
2. Obtain the MAC address of the MLC from the label on its rear panel. The MAC address should have this format: 00-05-A6-xx-xx-xx.
3. Connect the PC and the MLC to the same subnetwork.
4. At the PC, access the command prompt, then enter the `arp -s` command. Type in the desired new IP address for the unit and the MAC address of the unit (listed on the rear panel of the MLC). For example:
`arp -s 192.168.10.10 00-05-A6-03-69-B0`
5. Execute a ping command by entering “ping” followed by a space and the new IP address at the command prompt. For example:
`ping 192.168.10.10`

The response should show the new IP address, as shown in the figure at right.

```

C:\WINDOWS\system32\CMD.exe
C:\>ping 192.168.10.10

Pinging 192.168.10.10 with 32 bytes of data:
Reply from 192.168.10.10: bytes=32 time<1ms TTL=64
Reply from 192.168.10.10: bytes=32 time<1ms TTL=64
Reply from 192.168.10.10: bytes=32 time<1ms TTL=64
Reply from 192.168.10.10: bytes=32 time<1ms TTL=64

Ping statistics for 192.168.10.10:
    Packets: Sent = 4, Received = 4, Lost = 0 (0% loss),
    Approximate round trip times in milli-seconds:
        Minimum = 0ms, Maximum = 0ms, Average = 0ms

C:\>

```

Device Passwords

- The factory configured passwords for all accounts on this device have been set to the device serial number.
- Passwords are case sensitive.
- If the device is reset, the password will be the original password configuration, which is no password.
- For additional information, see the *MLC 104 IP Plus Series User Guide*.

Mounting

Attach cables using the preceding pages as a guide, then securely mount the MLC and other devices into the wall or furniture. Read the instructions and UL guidelines that come with the any mounting kit for installation procedures.

Setup Checklist: How to Proceed With Installation

Get Ready

- Familiarize yourself with the features of the MLC 104 IP Plus.
- Download and install the latest version of the Extron Global Configurator (GC) software and the latest driver package (available from www.extron.com or on the Extron Software Products Disc).
- Obtain IP setting information for the MLC from the network administrator.
- Obtain model names and setup information for devices the MLC will control.

Perform Physical Installation

- Mount the unit.
- Cable devices to ports on the MLC.
- Connect power cords and turn on the devices in the following order: output devices (projectors, monitors, speakers), the MLC, a PC (for setup), SCP panel (if desired), then all input devices (such as DVD players).

Configure the MLC

- Connect the PC and the MLC to the same Ethernet subnetwork and use ARP via Telnet, Extron DataViewer, or a similar application to configure the MLC for network communication.
- Create a new GC project and configure the MLC. See the *Global Configurator Help* file.
- Test the system.

If you have questions during installation and setup, you can call the [Extron S3 Sales & Technical Support Hotline](#) or the [Extron Control Systems Support Hotline](#).

For information on safety guidelines, regulatory compliances, EMI/EMF compatibility, accessibility, and related topics, see the [Extron Safety and Regulatory Compliance Guide](#) on the Extron website.